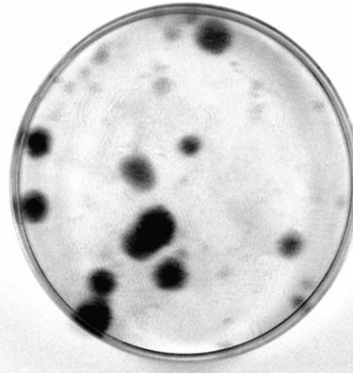
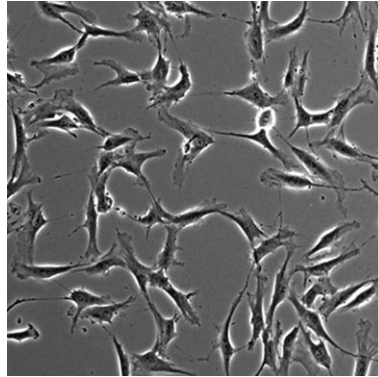
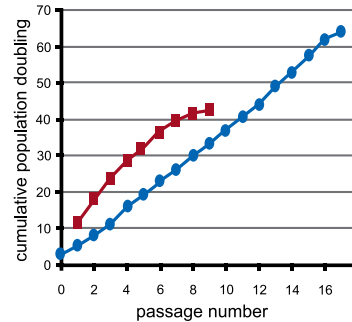
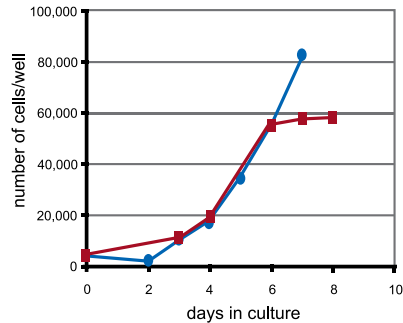


STEM CELL IDENTIFICATION

Stem cells are found in most tissues, DV Biologics can meet your research needs and identify your cell of interest.



Stem cell population isolated from tissue, expanded in culture for four passages retain typical fibroblast-like morphology and form colonies as tested by CFU assay.



Growth curve of stem cells. Clones were picked from the heterogenous mixture of cells to determine doubling time and proliferation capacity.